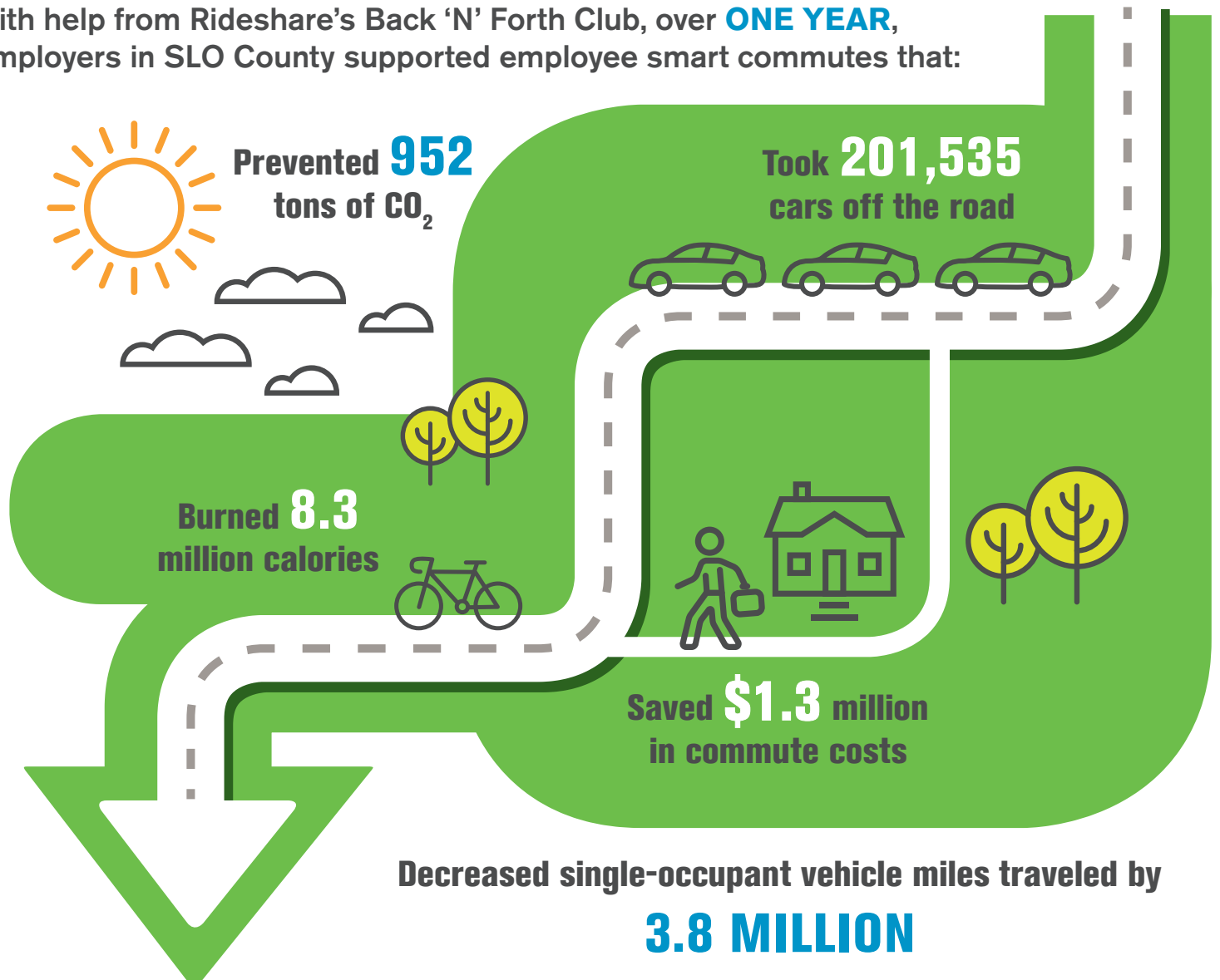


# YOUR COMMUTE CHOICE MATTERS

With help from Rideshare's Back 'N' Forth Club, over **ONE YEAR**, employers in SLO County supported employee smart commutes that:



## BACK 'N' FORTH CLUB PLATINUM LEVEL EMPLOYERS

County Assessor Department | County Auditor, Controller, Treasurer, and Tax Collector Department | County Planning & Building

## BACK 'N' FORTH CLUB GOLD LEVEL EMPLOYERS

Air Pollution Control District | Atascadero State Hospital | Bike SLO County | Cal Poly | California Men's Colony | Caltrans D5 | Central Coast Water Quality Board | City of San Luis Obispo | County of San Luis Obispo | Ernie Ball | French Hospital | MINDBODY | Morris & Garritano | PG&E | Revasum | Rick Engineering | SESLOC | Sierra Vista | SLOCOG | Sunrun | Transitions Mental Health Association | Wallace Group

## BACK 'N' FORTH CLUB SILVER LEVEL EMPLOYERS

Arroyo Grande Hospital | Atascadero Unified School District | Costco Wholesale | City of Paso Robles | Firestone Walker Brewing | IQMS | Promega Biosciences | REC Solar | RRM Design Group | Scientific Drilling | The Spice Hunter | Sports Warehouse | SRAM | Ten Over Studio

## BACK 'N' FORTH CLUB BRONZE LEVEL EMPLOYERS

Adelaida Cellers | Cannon Corp. | CAPSLO | Christ Classical Schools | City of Grover Beach | County Pension Trust | Creston Elementary | Cuesta College | Family Care Network | Garing, Taylor & Associates | Lezyne | Monterey Road Elementary | Native Trails | Santa Margarita Elementary

## WANT TO MAKE A SMARTER COMMUTE?

Join Rideshare's Back 'N' Forth Club! It's FREE! Learn more at [RIDESHARE.ORG](https://RIDESHARE.ORG).

Rideshare's Back 'N' Forth Club is a program of SLOCOG ([slocog.org](https://slocog.org)).

